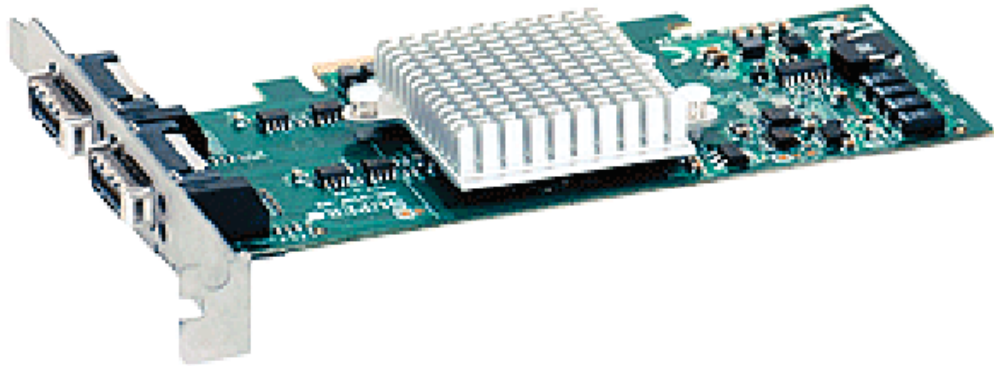


SUPERO®



AOC-UINF-M2

USER'S GUIDE

Rev. 1.0

The information in this User's Manual has been carefully reviewed and is believed to be accurate. The vendor assumes no responsibility for any inaccuracies that may be contained in this document, makes no commitment to update or to keep current the information in this manual, or to notify any person or organization of the updates. **Please Note: For the most up-to-date version of this manual, please see our web site at www.supermicro.com.**

Super Micro Computer, Inc. ("Supermicro") reserves the right to make changes to the product described in this manual at any time and without notice. This product, including software, if any, and documentation may not, in whole or in part, be copied, photocopied, reproduced, translated or reduced to any medium or machine without prior written consent.

IN NO EVENT WILL SUPERMICRO BE LIABLE FOR DIRECT, INDIRECT, SPECIAL, INCIDENTAL, SPECULATIVE OR CONSEQUENTIAL DAMAGES ARISING FROM THE USE OR INABILITY TO USE THIS PRODUCT OR DOCUMENTATION, EVEN IF ADVISED OF THE POSSIBILITY OF SUCH DAMAGES. IN PARTICULAR, SUPERMICRO SHALL NOT HAVE LIABILITY FOR ANY HARDWARE, SOFTWARE, OR DATA STORED OR USED WITH THE PRODUCT, INCLUDING THE COSTS OF REPAIRING, REPLACING, INTEGRATING, INSTALLING OR RECOVERING SUCH HARDWARE, SOFTWARE, OR DATA.

Any disputes arising between manufacturer and customer shall be governed by the laws of Santa Clara County in the State of California, USA. The State of California, County of Santa Clara shall be the exclusive venue for the resolution of any such disputes. Super Micro's total liability for all claims will not exceed the price paid for the hardware product.

WARNING: Handling of lead solder materials used in this product may expose you to lead, a chemical known to the State of California to cause birth defects and other reproductive harm.

Manual Revision 1.0

Release Date: March 17, 2008

Unless you request and receive written permission from SUPER MICRO COMPUTER, you may not copy or otherwise reproduce/distribute any part of this document.

Information in this document is subject to change without notice. Other products and companies referred to herein are trademarks or registered trademarks of their respective companies or mark holders.

Copyright © 2008 by SUPER MICRO COMPUTER INC.
All rights reserved.

Printed in the United States of America

Table of Contents

Introduction

Overview	iv
Product Features.....	iv
Supported Operating Systems	v
Required Cables.....	v
Supported Platforms.....	v
Motherboards	v
Servers	v
Contacting Supermicro.....	vii
Returning Merchandise for Service	viii

Chapter 1 Safety Guidelines

1-1 ESD Safety Guidelines	1-1
1-2 General Safety Guidelines	1-1
1-3 An Important Note to Users	1-2

Chapter 2 Add-on Card Components

2-1 Front Connectors and LEDs	2-1
2-2 Front Connector and LED Definitions	2-2

Chapter 3 Installation

3-1 Before Installation	3-1
3-2 Hardware Installation	3-1
3-3 Windows 2003/XP/2000 Driver Installation.....	3-2

Introduction

Overview

This manual is written for system integrators, PC technicians and knowledgeable PC users who intend to integrate Supermicro's AOC-UINF-M2 Add-on Card.

Product Features

The AOC-UINF-M2 offers the following features:

- Mellanox® ConnectX DDR MT25408A0-FCC-GI Controller
- Low-profile UIO form factor
- Dual CX4 Connectors
- 20Gb/s per port
- PCI-e X8 2.0
- RoHS compliant 5/6

Supported Operating Systems

The AOC-UINF-M2 supports the following Operating Systems (OS):

- Windows
- Linux
- VMWare ESX Server
- Novell

Required Cables

The AOC-UINF-M2 requires CX4 copper-based cable:

- Up to 10m for 20Gb/s or 20m for 10Gb/s

Supported Platforms

Motherboards

The following motherboards support the AOC-UINF-M2 add-on card.

H8SMU, PDSMU, X7DAL-E, X7DAL-E+, X7DBN, X7DBU, X7DCU, X7DWA-N, X7DWN+, X7DWU or H8DMU+.

Servers

The following servers support the AOC-UINF-M2 add-on card.

5015M-Ni, 5015M-NT, 5015M-UR, 6015B-NT, 6015B-NTR, 6015B-U, 6015B-UR, 6015C-Ni, 6015C-NTR, 6015C-UR, 6015W-Ni, 6015W-NTR, 6015W-UR, 5025M-UR, 6025C-UR, 6025W-NTR+, 6025W-UR, 7045A-WT, 1011M-UR, 1011M-Ni and 1021M-UR+

Notes

Contacting Supermicro

Headquarters

Address: Super Micro Computer, Inc.
980 Rock Ave.
San Jose, CA 95131 U.S.A.

Tel: +1 (408) 503-8000
Fax: +1 (408) 503-8008
Email: marketing@supermicro.com (General Information)
support@supermicro.com (Technical Support)

Web Site: www.supermicro.com

Europe

Address: Super Micro Computer B.V.
Het Sterrenbeeld 28, 5215 ML
's-Hertogenbosch, The Netherlands

Tel: +31 (0) 73-6400390
Fax: +31 (0) 73-6416525
Email: sales@supermicro.nl (General Information)
support@supermicro.nl (Technical Support)
rma@supermicro.nl (Customer Support)

Asia-Pacific

Address: Super Micro Computer, Inc.
4F, No. 232-1, Liancheng Rd.
Chung-Ho 235, Taipei County
Taiwan, R.O.C.

Tel: +886-(2) 8226-3990
Fax: +886-(2) 8226-3991
Web Site: www.supermicro.com.tw
Technical Support:
Email: support@supermicro.com.tw
Tel: 886-2-8226-1900

Returning Merchandise for Service

A receipt or copy of your invoice marked with the date of purchase is required before any warranty service will be rendered. You can obtain service by calling your vendor for a Returned Merchandise Authorization (RMA) number. When returning to the manufacturer, the RMA number should be prominently displayed on the outside of the shipping carton, and mailed prepaid or hand-carried. Shipping and handling charges will be applied for all orders that must be mailed when service is complete.

For faster service, RMA authorizations may be requested online (<http://www.supermicro.com/support/rma/>).

Whenever possible, repack the add-on card in the original Supermicro box, using the original packaging materials. If these are no longer available, be sure to pack the add-on card in an anti-static bag and inside the box. Make sure that there is enough packaging material surrounding the add-on card so that it does not become damaged during shipping.

This warranty only covers normal consumer use and does not cover damages incurred in shipping or from failure due to the alteration, misuse, abuse or improper maintenance of products.

During the warranty period, contact your distributor first for any product problems.

Chapter 1

Safety Guidelines

To avoid personal injury and property damage, carefully follow all the safety steps listed below when accessing your system or handling the components.

1-1 ESD Safety Guidelines

Electric Static Discharge (ESD) can damage electronic components. To prevent damage to your system, it is important to handle it very carefully. The following measures are generally sufficient to protect your equipment from ESD.

- Use a grounded wrist strap designed to prevent static discharge.
- Touch a grounded metal object before removing a component from the antistatic bag.
- Handle the add-on card by its bracket only; do not touch its components, peripheral chips or gold contacts.
- Put the card and peripherals back into their antistatic bags when not in use.

1-2 General Safety Guidelines

- Always disconnect power cables before installing or removing any components from the computer.
- Disconnect the power cable before installing or removing any cables from the system.
- Make sure that the add-on card is securely and properly installed on the motherboard to prevent damage to the system due to power shortage.

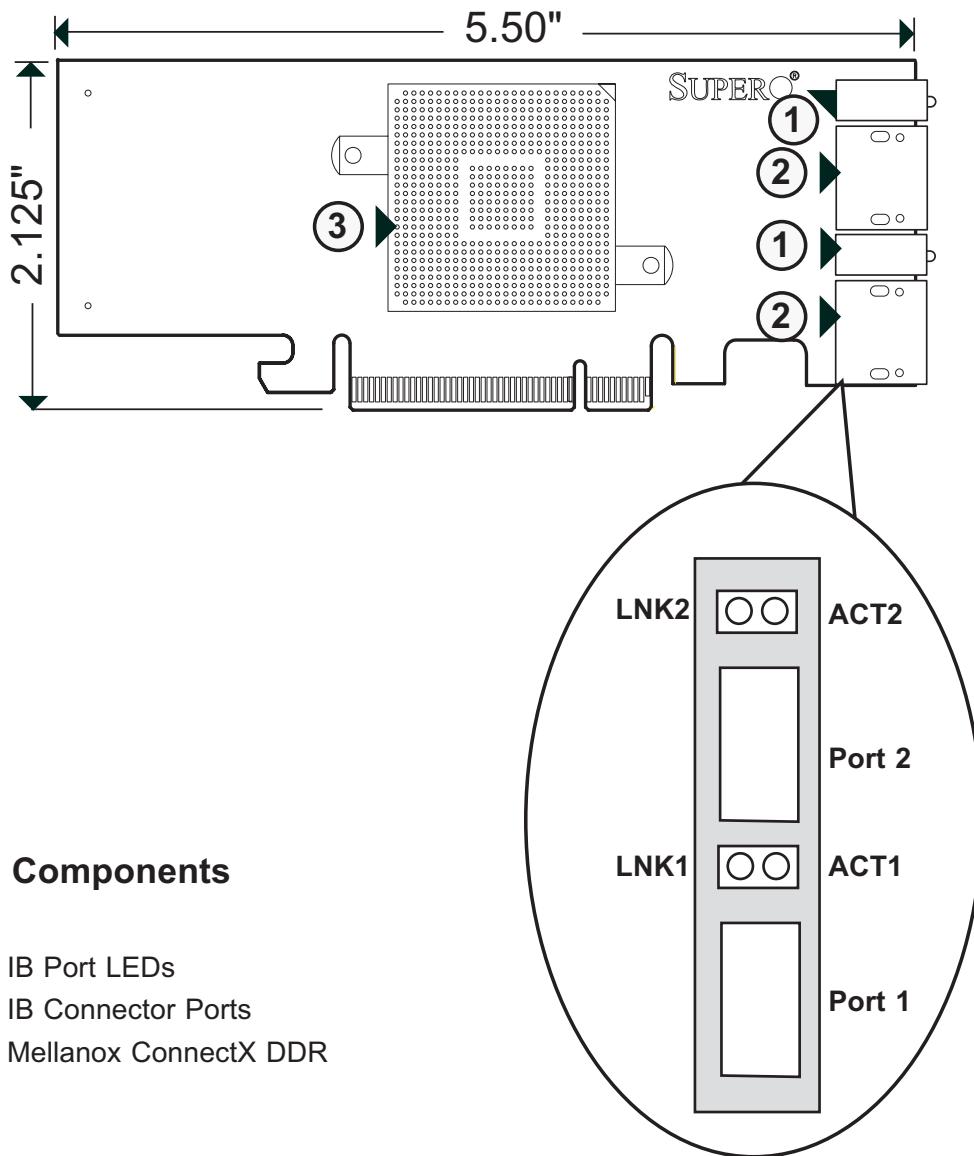
1-3 An Important Note to Users

- All images and layouts shown in this user's guide are based upon the latest PCB Revision available at the time of publishing. The card you have received may or may not look exactly the same as the graphics shown in this manual.

Chapter 2

Add-on Card Components

2-1 Front Connectors and LEDs



2-2 Front Connector and LED Definitions

1. IB Port LEDs

Each IB port includes two LEDs. The LEDs indicate connection and activity. Review the table to the right for LEDs definitions.

Port 1 LEDs		
LED	Color	Definition
ACT1	Yellow	Blinking - IB activity
LNK1	Green	On - Cable connected Blinking - Connection problem

Port 2 LEDs		
LED	Color	Definition
ACT2	Yellow	Blinking - IB activity
LNK2	Green	On - Cable connected Blinking - Connection problem

2. IB Ports

IB ports allow the Add-on card to connect a maximum of two CX4 copper-based cables. Each IB port provides up to 2Gb per second connection speed and require CX4 copper-based cables for maximum throughput.

The ports are designated Port 1 and Port 2.

Chapter 3

Installation

3-1 Before Installation

Before Installation, do the following

1. Power down the system.
2. Remove the power cord from the wall socket.
3. Use industry standard anti-static equipment (i.e. gloves or wrist strap) and/or an environment that prevents accidental electrostatic discharge.
4. Familiarize yourself with the server, motherboard, and/or chassis documentation.
5. Confirm that your Operating System includes the latest updates and hotfixes.

3-2 Hardware Installation

Important note: This card is designed for UIO (Supermicro's Universal I/O) servers and motherboards only.

Installing the Add-on Card

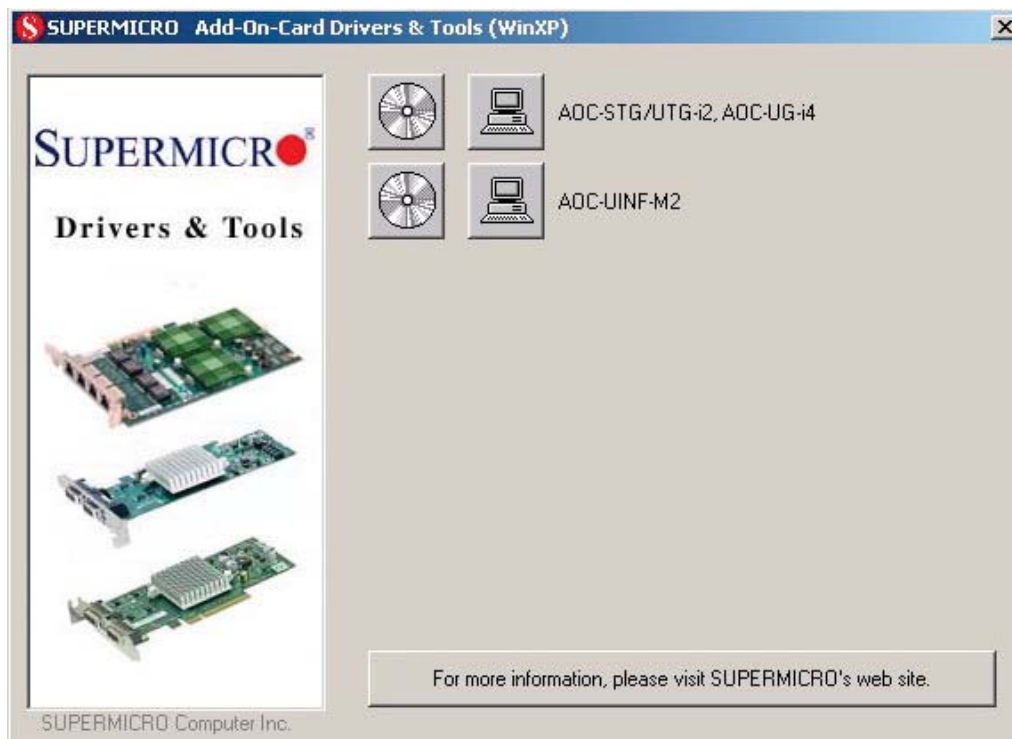
1. Remove the server cover and, if necessary, set aside any screws for later use.
2. Remove the add-on card slot cover. If the case requires a screw, place the screw aside for later use.
3. Position the add-on card in the slot directly over the connector and gently push down on both sides of the card until it slides into the PCI connector.
4. Secure the add-on card to the chassis. If required, use the screw that you previously removed.
5. Attach any necessary internal and external cables to the add-on card (see page v for required cables).

6. Replace the chassis cover.
7. Plug the power cord into the wall socket and power up the system.

3-3 Windows 2003/XP/2000 Driver Installation

Installing Windows

1. Insert the Supermicro driver CD into the CD-ROM drive.
2. A pop-up window will open, as shown below.



3. Click on the computer icon for the AOC-UINF-M2 add-on card.
4. Follow the prompts to install the Windows drivers for the AOC-UINF-M2 add-on card.
5. To view the contents of the CD, click on the CD icon.

Note: The driver CD that comes with the controller also contains drivers for Linux and VMware operating systems. To copy these drivers into your system, manually browse the CD, and copy the driver files.