



# Supermicro System Management Software

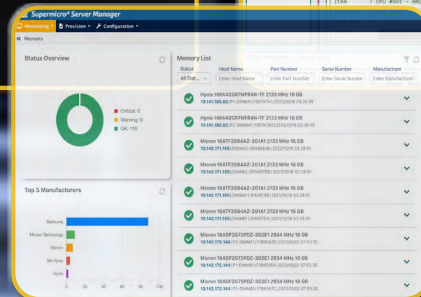
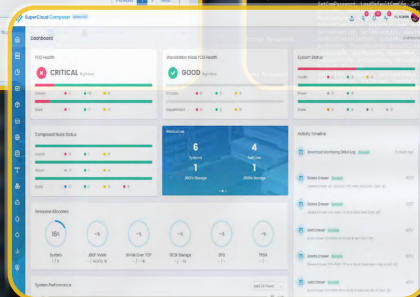
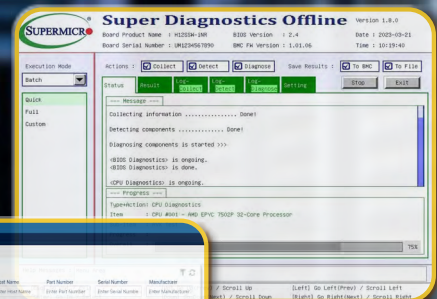
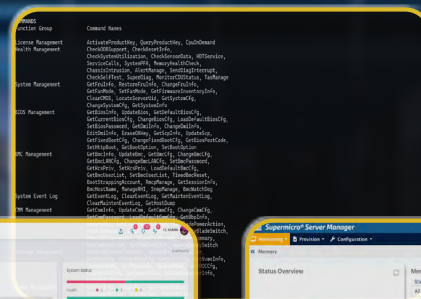
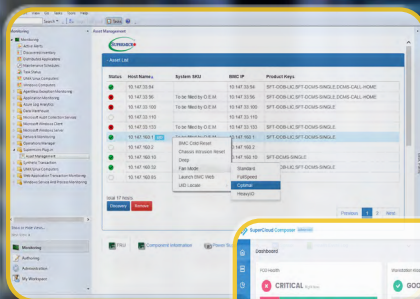
## 14th Generation Platform Edition

Complete Solutions to Help Organizations Optimize  
IT Infrastructure Utilization and Security

Management Plug-Ins

SAA

SDO

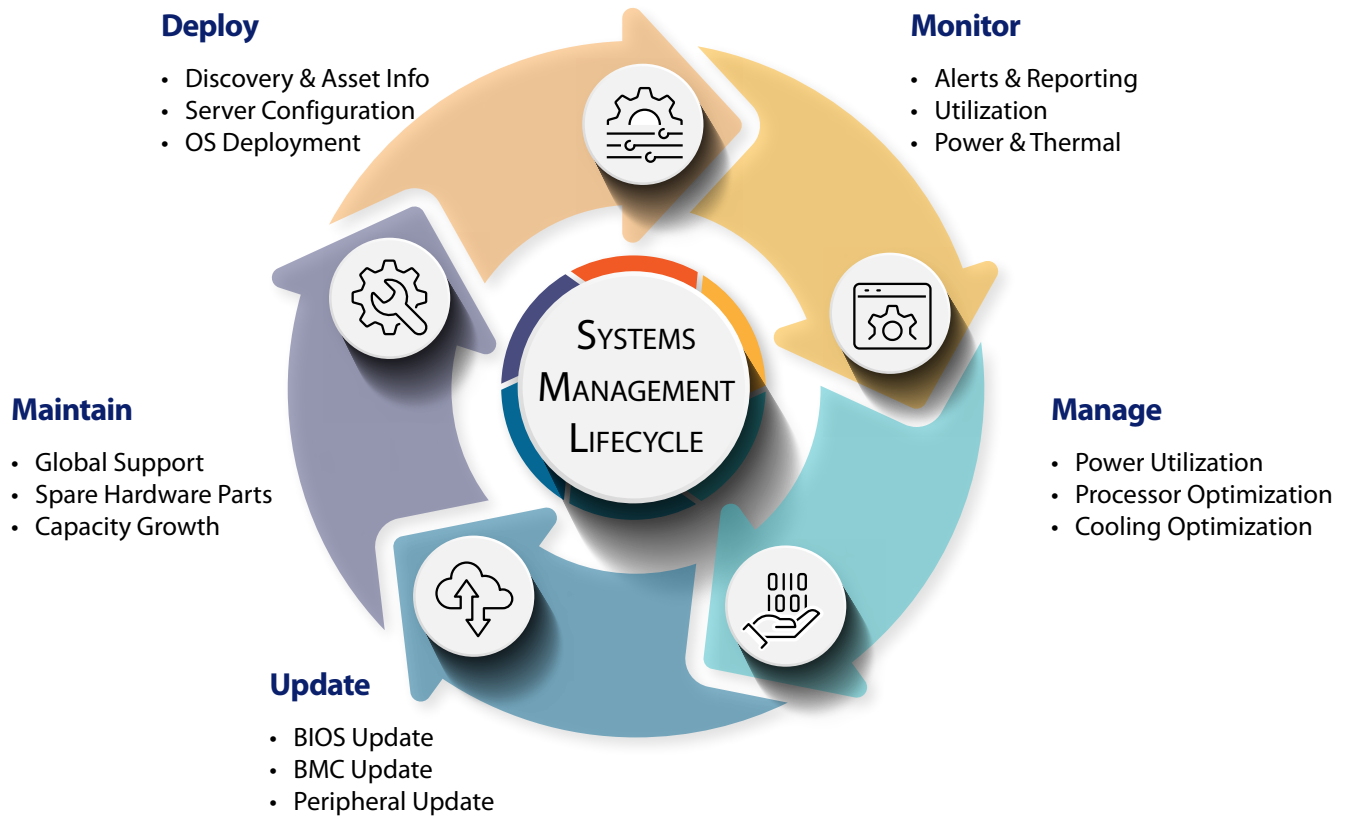


SCC

SSM

# SYSTEM MANAGEMENT SOFTWARE

Supermicro Delivers Total Software Solution to Fulfill System Management Lifecycle Tasks



## System Management Software Suite Bundles

Supermicro's system management software suite consists of a set of specialized applications available in the following bundles.

Suite Bundle	Standard	Basic	Advanced	Enterprise
<b>Description</b>	Fundamental single node monitoring and management features for system setup and maintenance.	Single node or small-scale remote system configuration, management and update features.	Medium or large-scale system management to improve performance, uptime, and management of peripheral devices.	Extended data center management for enhanced security, proactive service, software-defined infrastructure, and more.
<b>License</b>	<b>No license required</b>	<b>SFT-OOB-LIC</b>	<b>SFT-DCMS-SINGLE</b> (Optional add-on SFT-DCMS-SVC-KEY (1))	<b>SFT-DCMS-SINGLE + SFT-SDDC-SINGLE</b> (Optional add-on SFT-DCMS-SVC-KEY (1))
<b>SuperCloud Composer (SCC)</b>	N/A	N/A	N/A	Supported
<b>Supermicro Server Manager (SSM)</b>	N/A	N/A	Supported	Supported
<b>SuperServer Automation Assistant (SAA)</b>	Partially Supported	Partially Supported	Supported	Supported
<b>3rd Party Software Plug-ins</b>	N/A	N/A	Supported	Supported
<b>Local Host Diagnostics/Daemons<sup>2</sup></b>	Supported	Supported	Supported	Supported
<b>IPMIView Mobile (Android/IOS)</b>	Supported	Supported	Supported	Supported

<sup>1</sup> Onsite Services via SSM/SAA/ Service Calls (Call Home) requires SFT-DCMS-SINGLE + SFT-DCMS-SVC-KEY & SLA contract with Supermicro Global Service

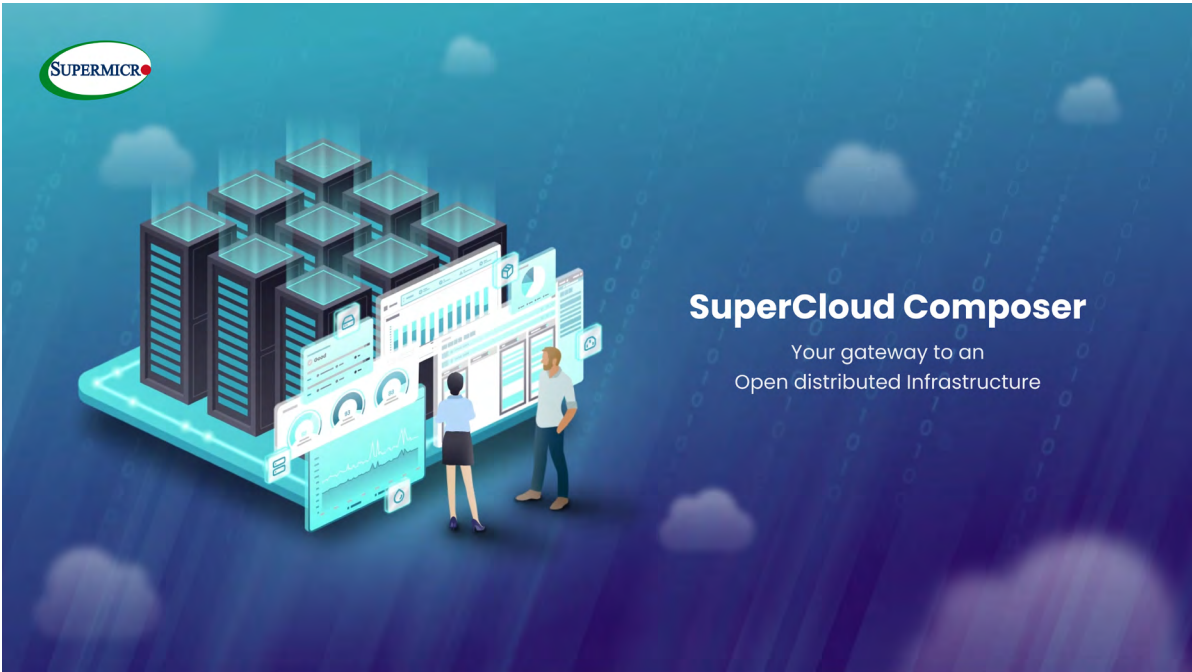
<sup>2</sup> Local Host Diagnostics/Daemons category includes Thin-Agent Service and Super Diagnostics Offline software. For detailed information, please check with your

Supermicro sales representative or refer to Supermicro website:  
<https://www.supermicro.com/en/solutions/management-software>

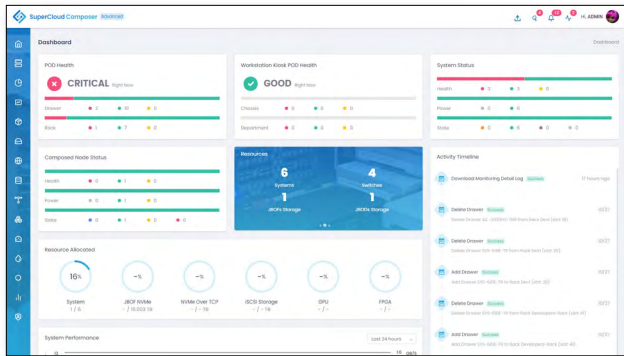
# SCC – SUPERCLOUD COMPOSER

SuperCloud Composer (SCC) is a composable cloud management platform that provides a unified dashboard to administer software-defined data centers. This cloud infrastructure management product brings speed, agility, and simplicity to IT administration by integrating data center tasks into a single intelligent management solution, with a robust composer engine that can orchestrate cloud workloads through a streamlined industry-standard Redfish® API. SCC can manage a broad portfolio of multi-generation Supermicro servers and third-party systems through its data center lifecycle management feature set from a single unified console.

Benefits	Features
Cost Savings - CapEx/OpEx	<ul style="list-style-type: none"><li>• Expands on optimized Supermicro Building Block Solutions®</li><li>• Third party vendor support</li></ul>
Intelligent Data Center Management	<ul style="list-style-type: none"><li>• POD &amp; rack-level management (including ToR switch)</li><li>• Call home management</li><li>• Asset management (monitoring, updates)</li><li>• GPU/Storage Performance Metrics</li><li>• Liquid Cooling Management from CDU to Cooling Tower</li></ul>
Frictionless Deployments	<ul style="list-style-type: none"><li>• Zero-touch provisioning for network configuration</li><li>• Hardware lifecycle management for software-defined data centers</li><li>• Northbound Redfish APIs provide seamless integration</li></ul>
Dynamically Configured Servers	<ul style="list-style-type: none"><li>• Zero-touch OS deployment in seconds</li></ul>
Device Scaling of Resources	<ul style="list-style-type: none"><li>• Monitor/manage resource pools in a composable, disaggregated infrastructure</li><li>• Software-defined node composer</li><li>• Expands storage and accelerators capacities to existing compute nodes</li><li>• Support for third party devices expands available resource selection</li></ul>
Unified End User Experience Data Driven Decisions	<ul style="list-style-type: none"><li>• Single pane of glass for data center deployment</li><li>• Rich analytics &amp; telemetry</li></ul>
Compliance & Governance	<ul style="list-style-type: none"><li>• Manage silicon Root of Trust (RoT)</li><li>• SSL security compliance</li><li>• User-defined role-based access control</li></ul>



Interface: WebUI/Redfish Northbound API  
Supported OS: Linux  
Per-Node License: Enterprise (SFT-DCMS-SINGLE + SFT-SDDC-SINGLE)

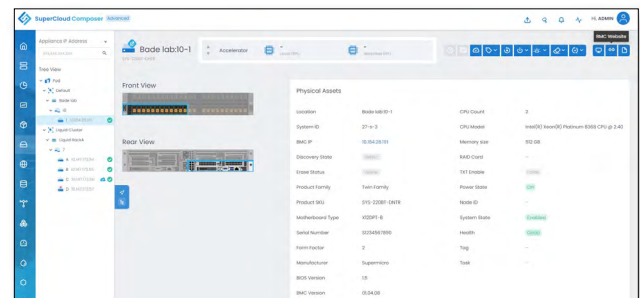


## SCC Dashboard

Displays an aggregated view of POD health, visualized system data analytics, and activity event timeline tracking, providing at-a-glance awareness of data center operations as well as detailed system status, composed node status, and allocated storage.

## Compute Node

Provides an inventory of fluid pools of compute where each physical fabric resource can be managed individually without the need to use the BMC web UI directly.

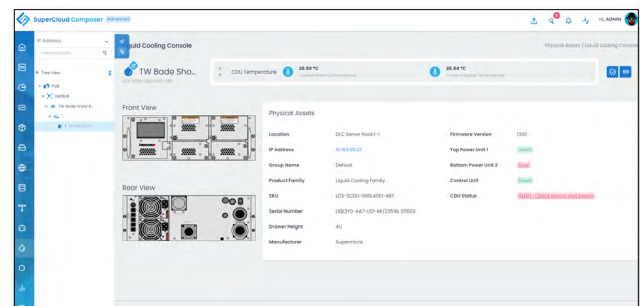


## Liquid Cooling Console

Provides is a powerful tool to collect vital information on physical assets and sensor data from a CDU (Cooling Distribution Unit), including pressure, humidity, pump and valve status, and more.

## POD View Rack Management

Offers the flexibility to organize data center requirements based on common workloads assigned to a rack deployment either at the edge or physical appliances in a remote data center.





# SSM – SUPERMICRO SERVER MANAGER

Supermicro Server Manager (SSM) is the all-in-one solution to manage Supermicro systems from a single console view, allowing IT data center administrators to monitor and manage a wide portfolio across multiple generations of Supermicro servers from a single console. SSM features server service and component monitoring (CPU, memory, storage controller) with alerts, power usage management, firmware update automation, OS deployment and many more features that help streamline server management.

## Features

- All-in-one, single pane-of-glass view console for server management
- 24/7 health monitoring and alerts
- Simultaneous multi-system operations with groups
- Firmware and OS deployment
- Power policy configuration
- Automated notifications and updates for newly available firmware

Interface: WebUI/REST APIs  
Supported OS: Windows, Linux  
Per-Node License: Advanced (SFT-DCMS-SINGLE)



Dashboard Overview

Host Status	Service Status	Host Name	Host Type	Address	Host Group	Last Check	Duration
Up	OK	10.142.81.39	IPMI_NA	10.142.81.39		8 hours ago	01d 00h 35m 07s
Up	OK	10.142.83.38	Redfish	10.142.83.38		8 hours ago	01d 00h 35m 10s
Up	OK	10.142.176.67	Redfish	10.142.176.67		8 hours ago	01d 00h 35m 09s
Up	OK	10.142.176.72	IPMI	10.142.176.72		8 hours ago	01d 00h 35m 09s
Up	OK	10.142.180.82	Redfish	10.142.180.82		8 hours ago	01d 00h 34m 57s
Up	OK	10.142.181.81	IPMI	10.142.181.81	MSiPlane_30142...	8 hours ago	01d 00h 34m 57s
Up	OK	10.142.182.164	IPMI	10.142.182.164	MSiPlane_30142...	8 hours ago	01d 00h 35m 07s
Up	OK	10.142.182.169	IPMI_NA	10.142.182.169	MSiPlane_30142...	8 hours ago	01d 00h 35m 10s
Up	OK	10.142.182.170	IPMI	10.142.182.170	MSiPlane_30142...	8 hours ago	01d 00h 35m 09s
Up	OK	10.142.182.178	IPMI	10.142.182.178	MSiPlane_30142...	8 hours ago	01d 00h 34m 56s
Up	OK	10.142.183.36	IPMI	10.142.183.36	MSiPlane_30142...	8 hours ago	01d 00h 35m 07s
Up	OK	10.142.183.214	IPMI	10.142.183.214	MSiPlane_30142...	8 hours ago	01d 00h 35m 08s
Up	OK	10.142.171.189	IPMI_NA	10.142.171.189	MSiPlane_30142...	8 hours ago	01d 00h 35m 08s
Up	OK	10.142.171.190	IPMI_NA	10.142.171.190	MSiPlane_30142...	8 hours ago	01d 00h 35m 08s
Up	OK	10.142.172.144	IPMI_NA	10.142.172.144	MSiPlane_30142...	8 hours ago	01d 00h 35m 08s
Up	OK	10.142.175.73	IPMI	10.142.175.73	MSiPlane_30142...	8 hours ago	01d 00h 35m 04s
Up	OK	10.184.13.102	Redfish	10.184.13.102	GP1	8 hours ago	01d 00h 35m 13s
Up	OK	10.184.13.221	Redfish	10.184.13.221	GP1	8 hours ago	01d 00h 34m 55s
Up	OK	10.184.14.74	Redfish	10.184.14.74	GP1	8 hours ago	01d 00h 34m 55s
Up	OK	10.184.14.101	Redfish	10.184.14.101	GP1	8 hours ago	01d 00h 34m 23s

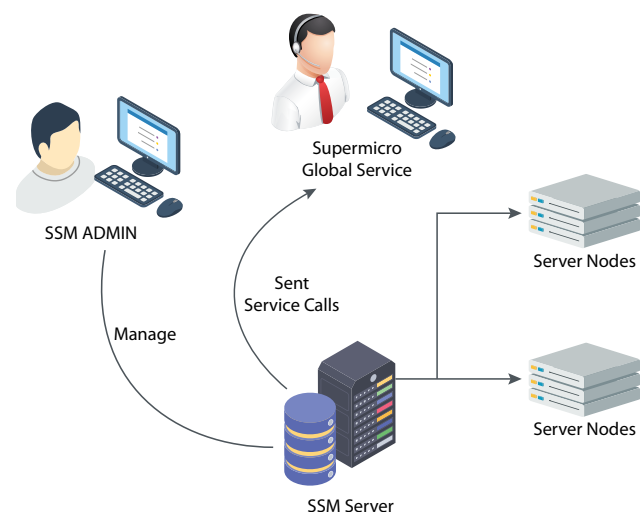
Host Monitoring View

## SSM SERVICE CALLS (CALL HOME)

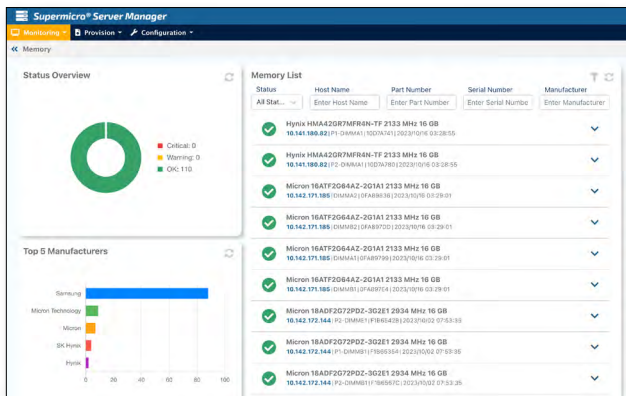
### Features

- Automated report and ticket generation from Supermicro Global Service Team (Supermicro service agreement required)
- Multi-level service call notifications
- Monitor pre-defined critical hardware failures of fully built systems by Supermicro
- Customer-defined sensor monitoring
- Enhanced relay SSM server via HTTPS service

Per-Node License: Enterprise: (SFT-DCMS-SVC-KEY)  
Others: Service contract with SMCI™ Global Services & Support



Service Calls Architecture

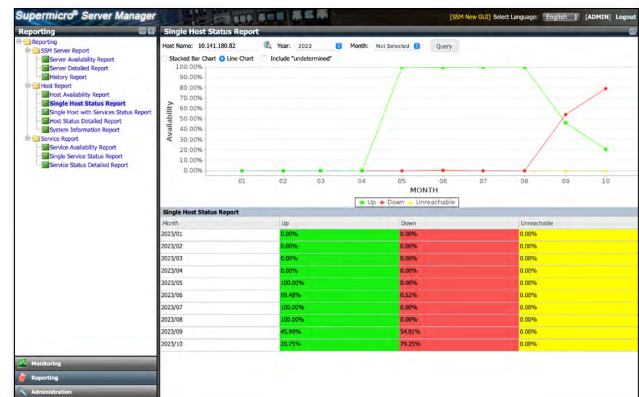


## Component Status Overview –

Provides a single console view of the components' status including health, model and host; supporting CPU, memory and storage adapters

## System Host Report –

View reports on system host availability, system information and Service availability/status.



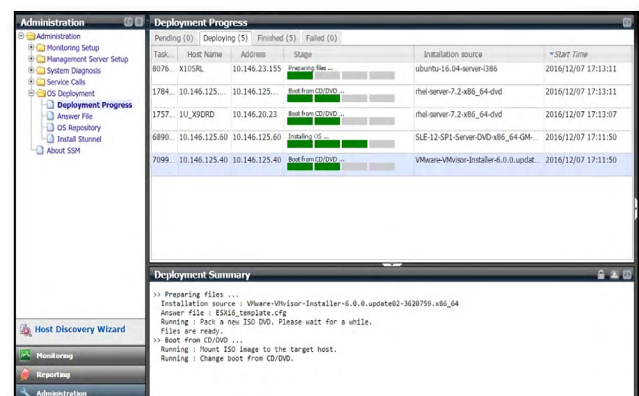
Plan Name	Compliance	Next Update	Host Name	Host Group	MB Model Name	SYS Model Name	Available FWs	Last Check
DataCent...	Not Compliant		10.141.81.39		X12DFU	SYS-6028U-104	BIOS-01.74.13	9 hours ago
	Not Compliant		10.141.13.221		X125TD	SYS-6028U-TR4T	BIOS-01.53.10	9 hours ago
	Not Compliant		10.141.21.102		X125DF	Super Server	BIOS-01.74.13	9 hours ago
	OK		10.141.174.57		X122DFU-6-G8-N122	Super Server		9 hours ago
	OK		10.141.13.162		X122DFU	Super Server		9 hours ago
	OK		10.141.14.161		B122DFU-CPU-D50	S86-410J		9 hours ago
	OK		10.141.17.123		X122DFU	Super Server		9 hours ago
	OK		10.141.23.21		X122DFU	Super Server		9 hours ago
FW N122...	Not Compliant		10.141.180.82		X122DFU-N6	SYS-620P-TRT	BIOS-01.74.13	9 hours ago
	Not Compliant		10.141.81.39		X12DFU	SYS-6028U-TR4	BIOS-01.74.13	9 hours ago
	Not Compliant		10.141.83.38		X122DFU-NR	Super Server	BIOS-01.74.13	9 hours ago
	OK		10.141.174.57		X122DFU-6-G8-N122	Super Server		9 hours ago
SUT_CM...	Not Compliant		10.141.180.84		MB122U-30...	MB122U-30...	BIOS-01.74.13	9 hours ago
	Not Compliant		10.141.180.196		MB122U-30...	MB122U-30...	BIOS-01.74.13	9 hours ago
	Not Compliant		10.141.180.181		MB122U-30...	MB122U-30...	BIOS-01.74.13	9 hours ago
	OK		10.141.175.73		MB122U-30...	MB122U-30...	BIOS-01.74.13	9 hours ago

## System Firmware Provisioning –

Automated notifications and updates for newly available firmware helps to keep system firmware up to date with customized intervals and scheduling.

## OS Deployment –

Built-in Linux-based OS deployment for operating system provisioning with customized Kickstart configuration file.



# SAA – SUPERSERVER AUTOMATION ASSISTANT

SuperServer Automation Assistant (SAA) is a next-generation CLI (Command-Line Interface) utility designed to streamline IT administrators' tasks in deploying, configuring, and updating at scales ranging from a single node to an entire data center.

SAA integrates management features from existing Supermicro tools, including SUM, SMCIPMITool, and IPMICFG, into a unified solution supporting Supermicro's latest platforms. It retains the ability to execute commands in parallel, enabling simultaneous management of multiple systems from a centralized host.

With comprehensive capabilities, SAA supports tasks such as basic BIOS, BMC firmware updates and configurations, and extend to peripheral device management and firmware updates.

Its versatile triple-channel management framework includes:

- In-band channel: Communicates through local system interfaces.
- Out-of-band (OOB) channel: Operates via the system's BMC, enabling management commands to run independently of the host OS
- Remote in-band channel: Leverages secure SSH and SFTP protocols to perform specific in-band operations from remote method.

This all-in-one tool provides IT administrators with an efficient and robust solution for system management.

## Feature Highlights

- In-Band/Out-of-Band/Remote-In-Band, Single/Multiple nodes operation
- BIOS, BMC, CMM, CPLD, storage, PSU, and other peripheral firmware management capabilities
- Parallel execution and configuration across multiple systems for large-scale management.
- Extended features of asset management, system utilization, sensor information, BIOS/BMC event logs, and TPM provisioning
- Unified CLI utility designed for seamless integration into user software stacks and scripting workflows

Interface: Command line (CLI)

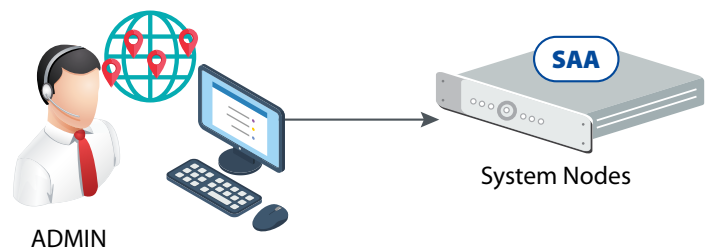
Supported OS: Windows, Linux, FreeBSD, ESXi 7.0/8.0, Linux AArch64, UEFI\*

License :

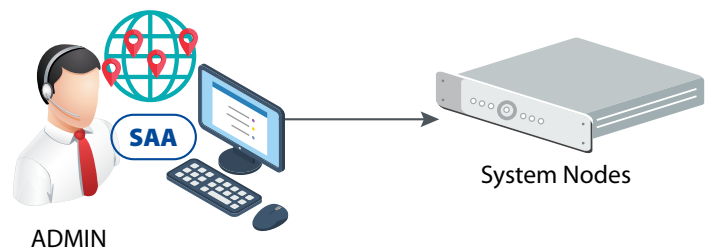
- Standard Update/Management: No license required
- Basic Remote Management: SFT-OOB-LIC
- Advanced Full Features: SFT-DCMS-SINGLE
- Service Calls: SFT-DCMS-SVC-KEY + SFT-DCMS-SINGLE

\* Essential Features only for UEFI version, refer to SAA UEFI User Guide for more detail

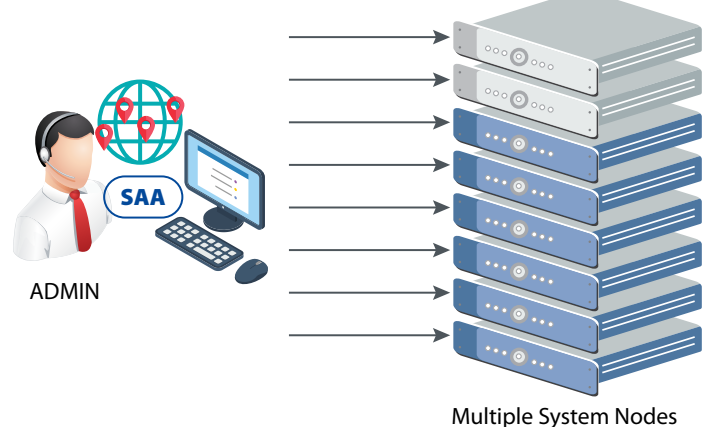
### Local Host Single Node In-Band



### Remote Single Node Out-of-Band



### Remote Multi-Node Out-of-Band



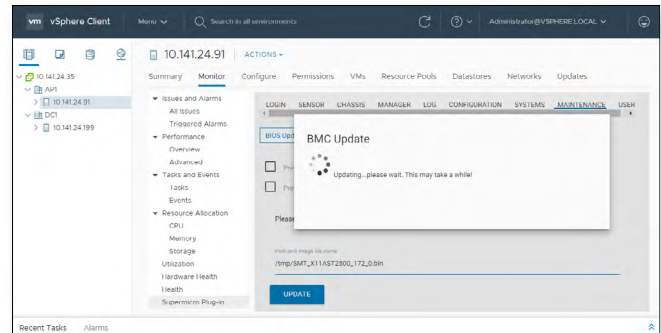
# MANAGEMENT PLUG-INS – THIRD PARTY SOFTWARE COMPLIANCE

Supermicro Management Plug-ins allow users to take advantage of Supermicro proprietary features in third party management software, simplifying data center administrators' system management across heterogeneous hardware providers.

## Plug-in for VMware vCenter

- Supports HTML5-based web clients
- Manage and monitor via BMC Redfish® API including system firmware updates

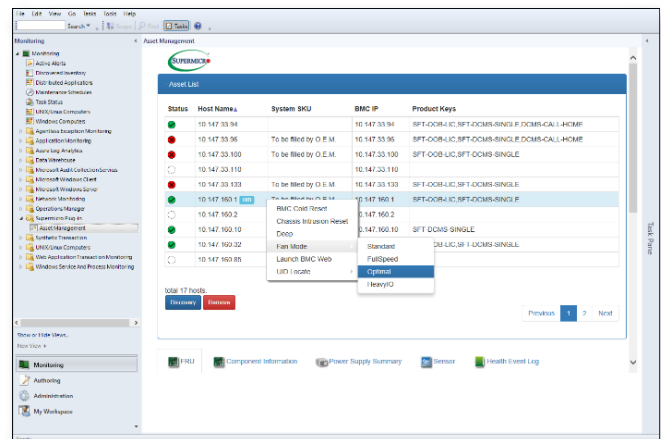
Interface: Web UI  
Supported OS: VMware vCenter  
License: Advanced (SFT-DCMS-SINGLE)



## Plug-in for Microsoft SCOM

- Centralized management on a single dashboard console
- Manage and monitor via BMC Redfish® API

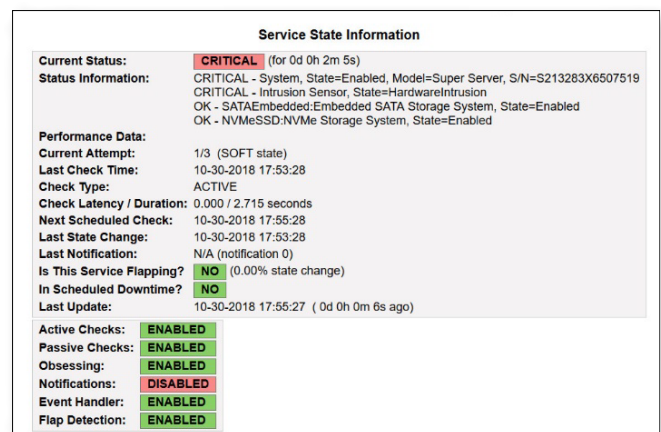
Interface: GUI Supported  
OS: Windows  
License: Advanced (SFT-DCMS-SINGLE)



## Plug-in for Nagios

- Essential system sensor monitoring features with event subscriptions
- Supports firmware updates and configuration

Interface: CLI  
Supported OS: Linux  
License: Advanced (SFT-DCMS-SINGLE)





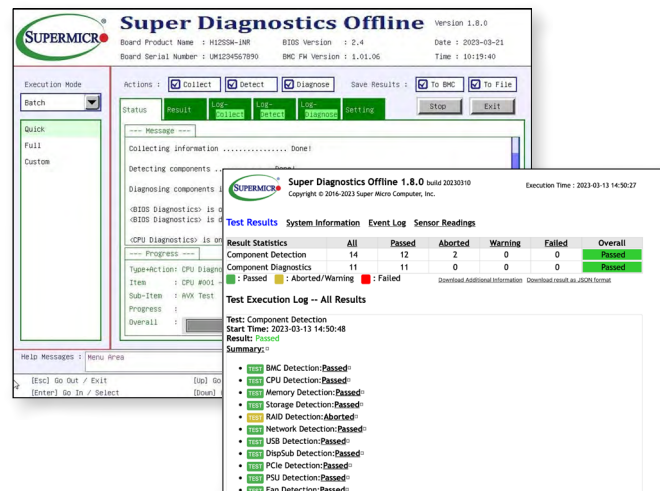
## OTHER APPLICATIONS – SDO, IPMIView MOBILE and TAS

On 14th generation platforms and above, Supermicro offers other useful applications for management purpose, including the hardware diagnostics application further assists troubleshooting, software applications for asset collection and mobile applications for system status check via cell phone.

### Super Diagnostics Offline (SDO)

- Lightweight and OS independent
- Local/remote system hardware diagnostics
- Comprehensive test report to aid with troubleshooting

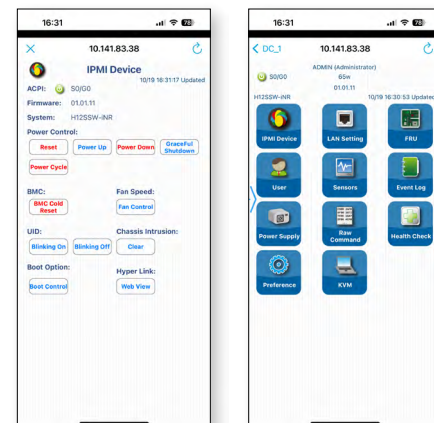
Interface: GUI/CLI  
Supported OS: N/A; only UEFI Shell required



### IPMIView Mobile (Android/iOS)

- Remote out-of-band single node basic BMC management with GUI
- Quick system status access and check via mobile app

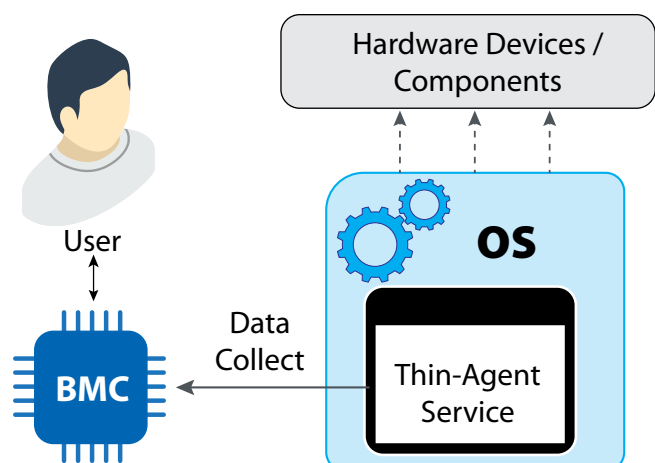
Interface: GUI  
Supported OS: Android, iOS



### Thin-Agent Service (TAS)

- Monitors system utilization under the running OS
- BMC state event log generation when device failure occurs

Interface: OS Daemon  
Supported OS: Windows, Linux, FreeBSD, VMware ESXi



# Better

Better Performance  
Per Watt and Per Dollar

# Faster

First-to-Market Innovation with the  
Highest Performance Server Designs

# Greener

Reduced Environmental  
Impact and Lower TCO



#### Worldwide Headquarters

Super Micro Computer, Inc.  
980 Rock Ave.  
San Jose, CA 95131, USA  
Tel: +1-408-503-8000  
Fax: +1-408-503-8008  
E-mail: Marketing@Supermicro.com

#### EMEA Headquarters

Super Micro Computer, B.V.  
Het Sterrenbeeld 28, 5215 ML,  
's-Hertogenbosch, The Netherlands  
Tel: +31-73-640-0390  
Fax: +31-73-641-6525  
E-mail: Sales\_Europe@supermicro.com

#### APAC Headquarters

Super Micro Computer, Taiwan Inc.  
3F, No. 150, Jian 1st Rd., Zhonghe Dist.,  
New Taipei City 235, Taiwan  
Tel: +886-2-8226-3990  
Fax: +886-2-8226-3991  
E-mail: Marketing@Supermicro.com.tw

[www.supermicro.com](http://www.supermicro.com)

©Super Micro Computer, Inc. Specifications subject to change without notice. All other brands and names are the property of their respective owners. All logos, brand names, campaign statements and product images contained herein are copyrighted and may not be reprinted and/or reproduced, in whole or in part, without express written permission by Supermicro Corporate Marketing.



MKT-0002-12/2024-R03